



WAREHOUSE STOCK CATALOG



Stock Nbr	Description	Unit	Est. Cost
1001	BANDS RUBBER #16	BX	0.59
1002	BANDS RUBBER #32	BX	0.85
1003	BANDS RUBBER #54 ASSORTED SIZES .25LBS	BX	0.51
1004	BASKET WASTE PAPER 7 GALLONS (BEIGE)	EA	3.59
1005	POST-IT NOTE PADS 1½" X2" YELLOW (100 SHEETS P/ PAD)	DZ	0.87
1006	POST-IT NOTE PADS 3"X3" CANARY YELLOW (100 SHEETS P/PAD)	EA	0.32
1007	POST-IT NOTE PADS 3"X5" CANARY YELLOW (100 SHEETS P/PAD)	EA	0.38
1008	POST-IT NOTE PADS 4"X4" RULED YELLOW (300 SHEETS P/PAD)	EA	4.69
1009	POST-IT NOTE PADS 4"X4" RULED NEON ASSORT. (90 SHEETS /PAD) 6 /PACK	PK	11.64
1010	PAPER, XEROGRAPHIC FOR COPIERS (WHITE)	RM	3.20
1011	WHITE LEGAL SIZE PAPER	RM	4.94
1012	BATTERY ALKALINE AA - 4 PACK	PK	0.60
1013	BATTERY ALKALINE AAA - 4 PACK	PK	0.55
1014	BATTERY ALKALINE, C - 2 PACK	PK	0.98
1015	BATTERY ALKALINE, D - 2 PACK	PK	1.09
1016	BATTERY, ALKALINE, 9 VOLT	EA	0.74
1017	1" WHITE VIEW BINDER W/INSIDE POCKETS	EA	0.91
1018	1" BLUE VIEW BINDER W/ INSIDE POCKETS	EA	0.91
1019	2" WHITE VIEW BINDER W/ INSIDE POCKETS	EA	1.14
1020	2" BLACK VIEW BINDER W/ INSIDE POCKETS	EA	1.14
1021	2" BLUE VIEW BINDER W/ INSIDE POCKETS	EA	1.14
1022	3" WHITE VIEW BINDER W/ INSIDE POCKETS	EA	1.77
1023	3" BLACK VIEW BINDER W/ INSIDE POCKETS	EA	1.77
1024	3" BLUE VIEW BINDER W/ INSIDE POCKETS	EA	1.77
1025	4" WHITE VIEW BINDER W/ INSIDE POCKETS; LOCKING SLANT-D RING	EA	13.29
1026	4" BLACK VIEW BINDER W/ INSIDE POCKETS; LOCKING SLANT-D RING	EA	13.29
1027	NOTEBOOK 3-SUBJECTS; 8½"X11"ASSORT. COLORS (NO COLOR CHOICE)	EA	1.65
1028	NOTEBOOK 1-SUBJECT; 8½"X11"ASSORT. COLORS (NO COLOR CHOICE)	EA	0.73
1029	RULED ASSORT. COLORS SENTENCE STRIPS; PACON#5165; 3"X24"	PK	2.35
1030	3/4" PLASTIC BINDING COMB BLACK; 150 SHEET CAPACITY; 100/BX	BX	13.69
1031	5/8" PLASTIC BINDING COMB BLACK; 125 SHEET CAPACITY; 100/BX	BX	12.89
1032	1/2" PLASTIC BINDING COMB BLACK; 85 SHEET CAPACITY; 100/BX	BX	7.69
1033	SELF-STICK EASEL PAD PLAIN WHITE; 25"X30", 30 SHEETS; 2/PK	PK	39.18





WAREHOUSE STOCK CATALOG



Stock Nbr	Description	Unit	Est. Cost
1034	SELF-STICK EASEL PAD YELLOW 1" RULED; 25"X30", 30 SHEETS	EA	21.12
1035	SELF-STICK EASEL PAD WHITE 1" RULED; 25"X30", 30 SHEETS	EA	21.24
1036	EXPO WHITEBOARD CLEANER STRAY BOTTLE; 22oz. (NON-TOXIC)	EA	4.35
1037	1" DIAMETER BOOK RING/LOOSE LEAF; 100/BX	BX	3.12
1038	WHITE CORRECTION TAPE	EA	1.37
1039	3/4" SMALL BINDER CLIPS; 12/BX	BX	0.17
1040	1 1/4" MEDIUM BINDER CLIPS; 12/BX	BX	0.37
1041	2" LARGE BINDER CLIPS; 12/BX	BX	0.86
1042	COLORED; ASSORTED SIZES BINDER CLIPS; 30/PK	PK	3.10
1043	AVERY WHITE ADDRESS LABELS 1" X 2 5/8" ; 3,000/BX	BX	17.15
1044	RETRACTABLE HIGHLIGHTERS; 5PK (YELLOW,PINK,BLUE,GREEN,ORANGE)	PK	5.01
1045	HIGHLIGHTER FLUORECENT YELLOW; 12/BX	DZ	3.45
1046	5-TAB CLEAR INSERTABLE DIVIDERS	ST	0.22
1047	5-TAB MULTICOLOR INSERTABLE DIVIDERS	ST	0.22
1048	8-TAB CLEAR INSERTABLE DIVIDERS	ST	0.42
1049	8-TAB MULTICOLOR INSERTABLE DIVIDERS	ST	0.32
1050	A-Z TAB BLACK/GOLD DIVIDERS	ST	2.30
1051	SHARPIE FINE POINT PERMANENT MARKER; ASSORT. COLORS; 8/PK	PK	5.01
1052	SHARPIE FINE POINT PERMANENT MARKER; BLACK; 12/BX	DZ	6.05
1053	RETRACTABLE GEL PEN .7MM; FINE POINT; ASSORT. COLORS(BK;RD;BL;GN)	PK	5.99
1054	PILOT G2 RETRACTABLE BLACK PEN; 12/BX	DZ	13.56
1055	PILOT G2 RETRACTABLE BLUE PEN; 12/BX	DZ	13.56
1056	PILOT G2 RETRACTABLE RED PEN; 12/BX	DZ	13.56
1057	PROTECTOR SHEETS CLEAR; 100/BX	BX	7.99
1058	BLUE REMOVABLE TAPE; 3/4" X 60YDS	EA	2.34
1059	CRAYOLA COLOR PENCILS; 12 COUNT	PK	1.15
1060	INDEX CARDS 3"X5" BLUE; BLANK 100/PK	PK	0.47
1061	INDEX CARDS 3"X5" CANARY; BLANK 100/PK	PK	0.47
1062	INDEX CARDS 3"X5" CHERRY; BLANK 100/PK	PK	0.47
1063	INDEX CARDS 3"X5" GREEN; BLANK 100/PK	PK	0.47
1064	INDEX CARDS 3"X5" BLUE; RULED 100/PK	PK	0.47
1065	INDEX CARDS 3"X5" CANARY; RULED 100/PK	PK	0.47
1066	INDEX CARDS 3"X5" CHERRY; RULED 100/PK	PK	0.47

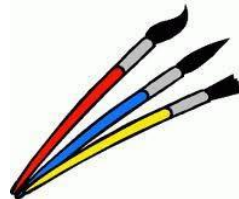




WAREHOUSE STOCK CATALOG



Stock Nbr	Description	Unit	Est. Cost
1067	INDEX CARDS 3"X5" GREEN; RULED 100/PK	PK	0.47
1068	ENERGIZER BATTERY CHARGER, NiMH BATTERIES (AA, AAA, C or D)	EA	25.49
1069	ENERGIZER NiMH RECHARGEABLE AA BATTERY; 4/PK	PK	10.62
1070	ENERGIZER NiMH RECHARGEABLE AAA BATTERY; 4/PK	PK	10.62
1101	BRISTEL BOARD 22 1/2X28 1/2 BLUE (POSTER BOARD)	SH	0.60
1104	BRISTEL BOARD 22 1/2X28 1/2 GREEN (POSTER BOARD)	SH	0.40
1106	BRISTEL BOARD 22 1/2X28 1/2 ORANGE (POSTER BOARD)	SH	0.40
1107	BRISTEL BOARD 22 1/2X28 1/2 RED (POSTER BOARD)	SH	0.39
1109	BRISTEL BOARD 22 1/2X28 1/2 YELLOW (POSTER BOARD)	SH	0.39
1110	BRISTEL BOARD 22 1/2X28 1/2 WHITE (POSTER BOARD)	SH	0.25
1111	BOARD CARD 22X28 BLACK	SH	2.20
1112	BOARD CARD 22X28 BLUE	SH	1.84
1113	BOARD CARD 22X28 LT BROWN	SH	1.75
1114	BOARD CARD 22X28 DK BROWN	SH	1.74
1115	BOARD CARD 22X28 GRAY	SH	1.85
1116	BOARD CARD 22X28 GREEN	SH	1.85
1117	BOARD CARD 22X28 TANGERINE	SH	1.79
1118	BOARD CARD 22X28 RED	SH	1.42
1119	BOARD CARD 22X28 YELLOW	SH	1.83
1120	BOARD CARD 22X28 WHITE	SH	1.85
1121	BOARD TAG MANILA 22X28 UNLINED	SH	0.40
1122	BOARD TAG MANILA 22X28 -3/4" RULED	SH	0.22
1123	BOARD TAG MANILA 22X28 - 1" RULED	SH	0.18
1124	BOARD TAG WHITE 22X28 - UNLINED	SH	0.19
1125	BOOKS COMPOSITION 40 PAGES (20 SHEETS)	DZ	2.67
1126	BOOKS COMPOSITION 80 PAGES (40 SHEETS)	DZ	3.36
1127	BINDER -1"- BLACK, VIEW, WITH 2 INSIDE POCKETS	EA	1.01
1130	BRACKET WALL USE W/ITEM 1173	EA	1.73
1131	BRSH ART ENAMEL BLK BRSTL 2"	DZ	8.73
1132	BRSH ESL PNT FLT WHT BRSTL 1/4"	DZ	0.82
1133	BRSH ESL PNT FLT WHT BRSTL 1/2"	DZ	2.22
1134	BRSH ESL PNT FLT BRSTL 3/4"	DZ	3.60
1135	BRSH WTR CLOR SIZE 3 BRSTL 1/2"	DZ	1.06

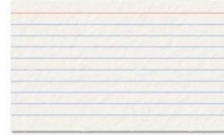




WAREHOUSE STOCK CATALOG



Stock Nbr	Description	Unit	Est. Cost
1137	CALENDAR BASE E-17-05	EA	8.25
1138	TABLES CHART PLAIN 24"X32"	EA	6.20
1139	TABLES CHART 1" RULED 24" X 32"	EA	2.83
1140	CARDS INDEX 3X5 PLAIN WHITE 1000/BOX	BX	3.26
1141	CARD INDEX 3X5 RULED WHITE 1000/BX	BX	3.20
1142	CARDS INDEX 5X8 PLAIN WHITE 500/BX	BX	5.20
1143	CARDS INDEX 5X8 RULED WHITE 500/BX	BX	6.93
1146	CHALK ART 12 COLORS FOR PAPER	BX	10.15
1148	CLAY MODELING ASS 4 1/4 STICKS	BX	1.67
1149	CLIP BOARD LETTER	EA	0.58
1150	CLIPS PAPER NO 1	BX	0.12
1151	CLIPS PAPER JUMBO	BX	0.36
1152	CLIPS PAPER CLAMP NO 1 LARGE	BX	0.35
1153	COMPASS	EA	0.31
1155	CRAYONS WAX RND LARGE 8 COLORS	BX	0.43
1156	CRAYONS WAX - 16 COLORS	BX	1.28
1157	ENVELOPES WHITE #6 3/4	BX	11.05
1158	ENVELOPES WHITE #10	BX	9.47
1159	ENVELOPES WHITE 1 GMP FLAP 6" X 9"	BX	44.38
1160	ENVELOPES MNLA GMD FLAP 9-1/2" X 12-1/2"	BX	29.83
1161	ENVELOPES MNLA CLASP 10" X 13"	BX	6.27
1162	ERASER CHALKBOARD FELT #5"	DZ	7.88
1163	EXPO MARKER BOARD ERASER	EA	1.38
1164	ERASER PENCIL PINK PEAR	DZ	0.65
1165	FASTENERS PAPER ROUND HEAD 1/2" W/100	BX	0.35
1167	FASTENERS PAPER ROUND HEAD 1" W/100	BX	0.76
1170	FILE MANILA FOLDERS 1/3 LETTER 100/BOX	BX	7.64
1171	FILE MANILA FOLDERS 1/3 CUT LEGAL 100/BOX	BX	8.77
1173	FLAGS U.S.A. WITH POLE (USE W/ BRACKET WALL # 1130) FOR CLASSROOM	EA	3.80
1174	FLAGS CALIFORNIA 4X6 (OUTDOOR)	EA	35.20
1175	FLAGS U.S. 4X6 (OUTDOOR)	EA	34.87
1176	FOLDERS HEAVY DUTY; 11"X8½" ; 2 POCKETS; ASSORTED COLORS; 25/PK	PK	3.71
1177	GLITTER 1 LB CAN BLUE	CN	3.93

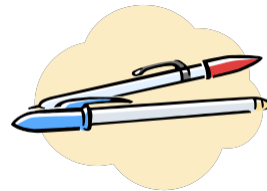




WAREHOUSE STOCK CATALOG



Stock Nbr	Description	Unit	Est. Cost
1178	GLITTER 1 LB CAN GOLD	CN	3.95
1179	GLITTER 1 LB CAN GREEN	CN	4.02
1180	GLITTER 1 LB CAN RED	CN	3.86
1181	GLITTER 1 LB CAN SILVER	CN	3.92
1182	GLITTER 1 LB CAN MULTI-COLOR	CN	3.98
1183	GLUE WHITE 4 OZ SQUEEZE BTLE	EA	0.47
1184	GLUE WHITE 1 QT. SIZE	EA	2.78
1185	GLUE WHITE GAL CONTAINER	EA	7.48
1186	MARKERS, WIPE OFF LOW-ODER 4-PACK CHISEL POINT	ST	2.29
1187	PENS BALL POINT BLACK (STUDENTS)	DZ	0.86
1188	PENS BALL POINT BLUE (STUDENTS)	DZ	0.86
1191	GLUE STICK .30 OZ	EA	0.26
1192	PENS FINE POINT BLK (OFFICE)	DZ	7.49
1193	PENS FELT FINE POINT BLACK	DZ	3.83
1194	PENS FINE POINT FELT BLUE	DZ	2.06
1195	PINS PUSH 100/BOX	BX	0.72
1196	PENS FINE POINT FELT RED	DZ	1.86
1197	PAINT WATER COLOR OVL-8	BX	1.38
1201	PAPER BOND 8 1/2X11 BLUE	CS	43.66
1202	PAPER BOND 8 1/2X11 CHERRY	CS	42.42
1203	PAPER BOND 8 1/2X11 GOLDENROD	CS	42.63
1204	PAPER BOND 8 1/2X11 GREEN	CS	43.76
1205	PAPER BOND 8 1/2X11 PINK	CS	42.60
1206	PAPER BOND 8 1/2X11 SALMON	CS	43.51
1207	PAPER BOND 8 1/2X11 YELLOW	CS	44.19
1209	PAPER CONST 12X18 BLACK	FL	2.41
1210	PAPER CONST 12X18 BLUE	FL	2.31
1211	PAPER CONST 12X18 LT BLUE	PK	1.68
1212	PAPER CONST 12X18 DR BROWN	PK	1.68
1213	PAPER CONST 12X18 LT GRAY	PK	1.73
1214	PAPER CONST 12X18 FESTIVE GREEN	PK	2.41
1215	PAPER CONST 12X18 LT GREEN	PK	1.77
1217	PAPER CONST 12X18 MAGENTA	PK	1.65

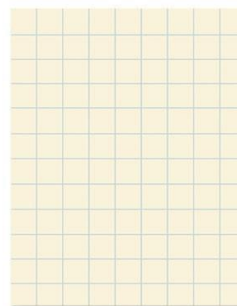




WAREHOUSE STOCK CATALOG



Stock Nbr	Description	Unit	Est. Cost
1218	PAPER CONST 12X18 ORANGE	PK	1.73
1219	PAPER CONST 12X18 SCARLET	PK	1.67
1220	PAPER CONST 12X18 PINK	FL	2.42
1221	PAPER CONST 12X18 VIOLET	PK	2.21
1222	PAPER CONST 12X18 WHITE	PK	1.67
1223	PAPER CONST 12X18 YELLOW	PK	2.39
1224	PAPER CREPE BLACK	FL	0.79
1225	PAPER CREPE ICE BLUE	FL	0.38
1226	PAPER CREPE MIDNIGHT BLUE	FL	0.76
1227	PAPER CREPE SAPPHIRE BLUE	FL	0.78
1230	PAPER CREPE BROWN	PK	0.45
1233	PAPER CREPE HOLIDAY GREEN	FL	0.46
1234	PAPER CREPE MINT GREEN	FL	0.47
1235	PAPER CREPE LEAF GREEN	FL	0.34
1236	PAPER CREPE ORCHID	FL	0.34
1237	PAPER CREPE MAROON	FL	0.56
1238	PAPER CREPE BRIGHT ORANGE	FL	0.41
1239	PAPER CREPE PINK	FL	0.46
1241	PAPER CREPE HOLIDAY RED	FL	0.46
1242	PAPER CREPE FLAMED RED	FL	0.79
1243	PAPER CREPE WHITE	FL	0.79
1244	PAPER CREPE PRIMROSE YELLOW	FL	0.47
1245	PAPER CREPE BUTTERCUP YELLOW	FL	0.42
1246	PAPER CREPE PURPLE	FL	0.46
1247	PAPER CROSS SECT 1/4" SQ MNLA	RM	4.43
1248	PAPER CROSS SECT 1/2" SQ MNLA	RM	5.07
1249	PAPER CROSS SECT 1" SQ MNLA	RM	6.29
1250	PAPER DRAWING WHITE 12X18	RM	11.44
1251	PAPER DRAWING MANILA 12X18	RM	9.83
1253	NEWSPRINT 8 1/2X11 LETTERHEAD RULED	RM	2.83
1254	PAPER NEWSPRINT 12X9 RULED WITH 3/8" SPACER	RM	3.71
1256	PAPER NEWSPRINT WITH RED LINES 18X12	RM	9.29
1257	PAPER NEWSPRINT 12X18 50# PLAIN	CS	21.36





WAREHOUSE STOCK CATALOG



Stock Nbr	Description	Unit	Est. Cost
1258	PAPER NEWSPRINT 18X24 50# PLAIN	CS	32.71
1259	PAPER LTHD RULED WHITE 8 1/2" X 11" RULING 3/8" W/500	RM	2.78
1260	PAPER NEWSPRINT 18X12 RULED	RM	8.45
1261	NEWSPRINT 18X12 TOP UNRULED BOTTOM RULED	RM	9.11
1262	PAPER NEWSPRINT 9"X12" RULED (PORTRAIT)	RM	4.59
1263	PAPER NEWSPRINT 12X9 EVERETT 48-540	RM	5.77
1264	PAPER RULED NEWS 12X9	RM	2.99
1265	PAPER NEWSPRINT 11"X8-1/2" RULED (LANDSCAPE)	RM	4.24
1266	PAPER TISSUE 20X30 BLACK	QR	1.15
1267	PAPER TISSUE 20X30 DK BLUE	QR	1.10
1268	PAPER TISSUE 20X30 LT BLUE	QR	1.03
1269	PAPER TISSUE 20X30 BROWN	EA	1.07
1270	PAPER TISSUE 20X30 CERISE	QR	0.97
1271	PAPER TISSUE 20X30 GOLD	QR	1.06
1272	PAPER TISSUE 20X30 GREEN APPLE	QR	1.00
1274	PAPER TISSUE 20X30 HOLLY-GRN	QR	1.07
1275	PAPER TISSUE 20X30 LAVENDER	QR	1.12
1276	PAPER TISSUE 20X30 ORANGE	QR	1.08
1277	PAPER TISSUE 20X30 LT PINK	QR	1.20
1278	PAPER TISSUE 20X30 DK PINK	QR	0.90
1279	PAPER TISSUE 20X30 PURPLE	QR	1.20
1280	PAPER TISSUE 20X30 SCARLET - RED	QR	1.08
1281	PAPER TISSUE 20X30 WHITE	QR	0.90
1282	PAPER TISSUE 20X30 YELLOW	QR	1.38
1285	PAPER ART KRAFT BLACK (BUTCHER)	RL	64.48
1286	PAPER, ART KRAFT BLUE (BUTCHER)	RL	76.71
1287	PAPER ART KRAFT GREEN (BUTCHER)	RL	59.89
1288	PAPER ART KRAFT ORANGE (BUTCHER)	RL	61.52
1289	PAPER ART KRAFT PINK (BUTCHER)	RL	80.01
1290	PAPER ART KRAFT RED (BUTCHER)	RL	69.12
1291	PAPER ART KRAFT WHITE (BUTCHER)	RL	66.52
1292	PAPER ART KRAFT YELLOW (BUTCHER)	RL	65.91
1293	PAPER ART KRAFT PURPLE (BUTCHER)	RL	65.02

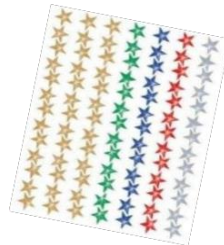
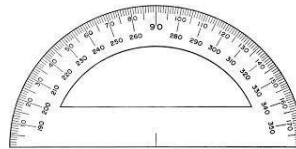
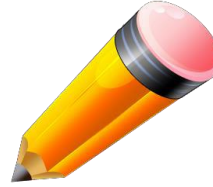




WAREHOUSE STOCK CATALOG



Stock Nbr	Description	Unit	Est. Cost
1298	PENS VISUAL AID 8 COLOR SET	SP	6.52
1307	PENCILS COMM #2 YELLOW	DZ	1.37
1308	PENCILS BEGINNERS MEDIA W/O ERASER	DZ	1.59
1309	PENCILS CHECKING RED	DZ	1.09
1310	PENCILS CHECKING BLUE	DZ	1.56
1312	PENCILS BEGINNERS W/ERASER DIX133	DZ	2.45
1317	PIPE CLEANERS 7" ASST COLORS	PK	0.24
1318	PIPE CLEANERS 7" WHITE	PK	0.79
1319	PIPE CLEANERS 11 1/2" ASST COLORS	PK	1.77
1320	PIPE CLEANERS 11 1/2" WHITE	PK	1.26
1321	POINTERS CHALKBOARD	EA	1.79
1322	PROTRACTORS PLASTIC 4"	EA	0.28
1323	PUNCHER PAPER 3 HOLE	EA	7.71
1324	PAPER PUNCHER SINGLE ROUND HOLE	EA	0.26
1325	REINFORCEMENTS GUMMED #2	BX	0.32
1326	RULERS DESK 1/4" DIV WOOD	DZ	2.20
1327	RULERS DESK 1/16" DIV WOOD	DZ	2.07
1328	RULERS METRIC	DZ	1.94
1334	SCISSORS TEACHER	EA	3.98
1335	SCISSORS 4 1/2" BLUNT PT	DZ	11.04
1336	SCISSORS 5" 1 BL BLT 1 BL PT	DZ	6.56
1337	SCISSORS LEFTY BLUNT PT	DZ	18.23
1338	SENTENCES STRIPS STR	RL	4.48
1339	STAPLE REMOVER	EA	0.21
1340	STAPLES	EA	1.10
1341	STAPLING MACHINE #3	EA	4.89
1342	SHARPENER PENCIL #55	EA	15.22
1346	STAR #54-052 BLUE	BX	0.89
1347	STARS #54-022 GOLD	BX	0.89
1348	STARS #54-062 GREEN	BX	0.96
1349	STAR #54-042 RED	BX	0.96
1350	STARS #54-012 SILVER	BX	0.87
1351	TABLETS LEGAL RULED	EA	1.18





WAREHOUSE STOCK CATALOG



Stock Nbr	Description	Unit	Est. Cost
1352	TABLETS LETTER RULED	EA	0.60
1353	TACKS THUMB SOLID HEAD 2 3/8	BX	0.24
1354	TAPE CELLULOSE 3/4"X1296	EA	0.89
1355	TAPE DISPENSER	EA	0.83
1356	TAPE MASKING	EA	0.97
1357	TAPE ADDING MACHINE WHT 2 1/4"	RL	0.22
1359	TAPE ADDING MACHINE WHT 3"	RL	0.49
1360	PAINT LIQUID TEMPERA BLK	CN	1.28
1361	PAINT LIQUID TEMPERA BRIGHT BLUE	CN	1.25
1362	PAINT LIQUID TEMPERA BROWN	CN	1.29
1363	PAINT LIQUID TEMPERA GREEN	CN	1.29
1364	PAINT LIQUID TEMPERA ORANGE	CN	1.29
1365	PAINT LIQUID TEMPERA RED	CN	1.30
1366	PAINT LIQUID TEMPERA TURQUOISE	CN	1.31
1368	PAINT LIQUID TEMPERA VIOLET	CN	1.25
1369	PAINT LIQUID TEMPERA WHITE	CN	1.25
1370	PAINT LIQUID TEMPERA YELLOW	CN	1.29
1371	PAINT LIQUID TEMPERA PEACH	CN	1.24
1372	PAINT LIQUID TEMPERA MAGENTA	CN	1.25
1378	YARN ACRYLIC BLACK	SP	3.67
1380	YARN ACRYLIC LT BLUE	SP	3.65
1382	YARN ACRYLIC DK BROWN	SP	3.63
1384	YARN ACRYLIC DK GREEN	SP	4.33
1386	YARN ACRYLIC ORANGE	SP	3.72
1388	YARN ACRYLIC PURPLE	SP	3.67
1390	YARN ACRYLIC RED	SP	3.72
1392	YARN ACRYLIC WHITE	SP	3.72
1394	YARN ACRYLIC YELLOW	SP	3.69
1395	PHONE MESSAGE PAD; WIREBOUND, 4 FORMS P/ PAGE; CANARY DUPLICATES	EA	3.03
1404	RIBBONS SYSTEMS 40 WHEEL WRITER	BX	12.49
1406	LIFT OFF SYSTEMS 40 WHEEL WRITER	EA	9.15
1408	FLUID CORRECTION WHITE	EA	1.12
1409	PAPER CONSTRUCTION 12X18 TAN	PK	2.30





WAREHOUSE STOCK CATALOG



Stock Nbr	Description	Unit	Est. Cost
1410	PAPER CONSTRUCTION 12X18 WARM BROWN	PK	2.43
1411	PAPER ART KRAFT BROWN	RL	83.75
1412	TONGUE DEPRESSORS 6" 1000/BX	BX	5.68
1413	RECEIPT BOOK 3 PART 100/SET	EA	7.96
1414	MARKERS FELT WATER BASE BLACK	DZ	2.20
1415	MARKERS FELT WATER BASE BLUE	DZ	2.28
1416	MARKERS FELT WATER BASE BROWN	DZ	2.29
1417	MARKERS FELT WATER BASE GREEN	DZ	2.29
1418	MARKERS FELT WATER BASE ORANGE	DZ	2.38
1419	MARKERS FELT WATER BASE PURPLE	DZ	2.31
1420	MARKERS FELT WATER BASE RED	DZ	2.20
1421	MARKERS FELT WATER BASE YELLOW	DZ	2.20
1422	MARKERS FELT WATER BASE 8-COLOR SET	ST	1.23
2101	BASKETBALL OFFICIAL	EA	6.73
2103	BASKETBALL GOAL NET NYLON	EA	1.92
2107	FOOTBALL INTERMEDIATE SIZE	EA	8.55
2109	FOOTBALL JUNIOR SIZE	EA	5.89
2111	FOOTBALL BELT & FLAGS	ST	2.82
2113	FOOTBALL FLAGS ITEM 2111	ST	0.40
2121	ROPE JUMP #12 100 FT	EA	22.40
2125	SOCCER BALL OFFICIAL SIZE	EA	9.34
2127	SOFTBALL 12" OFFICIAL SIZE SOFT	EA	3.50
2129	SOFTBALL 12" OFFICIAL SIZE SUPER SOFT	EA	7.86
2143	SOFTBALL BASES RUBBER 14"	EA	6.99
2145	SOFTBALL CATCHER	EA	9.99
2147	SOFTBALL HOME PLATE RUBBER 17"	EA	6.89
2153	TETHERBALL RUBBER COVER	EA	15.17
2155	UTILITY BALL 6" RUBBER RED	EA	2.27
2157	UTILITY BALL 10" RUBBER RED	EA	5.04
2159	UTILITY BALL 13" RUBBER RED	EA	6.81
2161	UTILITY BALL 16" RUBBER RED	EA	4.45
2163	VOLLEYBALL RUBBER COVERED	EA	4.48
2165	VOLLEYBALL NET	EA	30.01





WAREHOUSE STOCK CATALOG



Stock Nbr	Description	Unit	Est. Cost
2167	WHISTLE CHROME FINISH	EA	3.04
2169	INFLATING NEEDLES	EA	0.15
2170	CONE, BOUNDARY 9" ORANGE	EA	1.14
2171	CONE, BOUNDARY 12" ORANGE	EA	4.94
2172	CONE, BOUNDARY 12", RAINBOW COLORED, SET OF 6 (BL,GR,OR,PU,RD,YW)	ST	28.18
2173	CONE, BOUNDARY 18" HEAVY BASE, ORANGE	EA	6.30
2174	DISC, BOUNDARY, YELLOW (12 EACH)	DZ	3.28
2175	DISC, BOUNDARY, RAINBOW COLORED (12 EACH)	DZ	3.28
2176	STOPWATCH, DIGITAL, SPLITIME; BLACK	EA	5.08
2177	BAG, EQUIPMENT, 32"X36", MESH, ORANGE	EA	3.68
7010	LAMINATING FILM 1.5 MIL 25"	RL	21.64

